

OTDR report

Job info

Job ID	:	Reason	:
Contractor	:	Operator A	:
Customer	:	Operator B	:
Test date	:	File	:

31.12.1999 (23:01:15 GMT+1:00) KRAKR01OK - 15 - 001_1550.sor

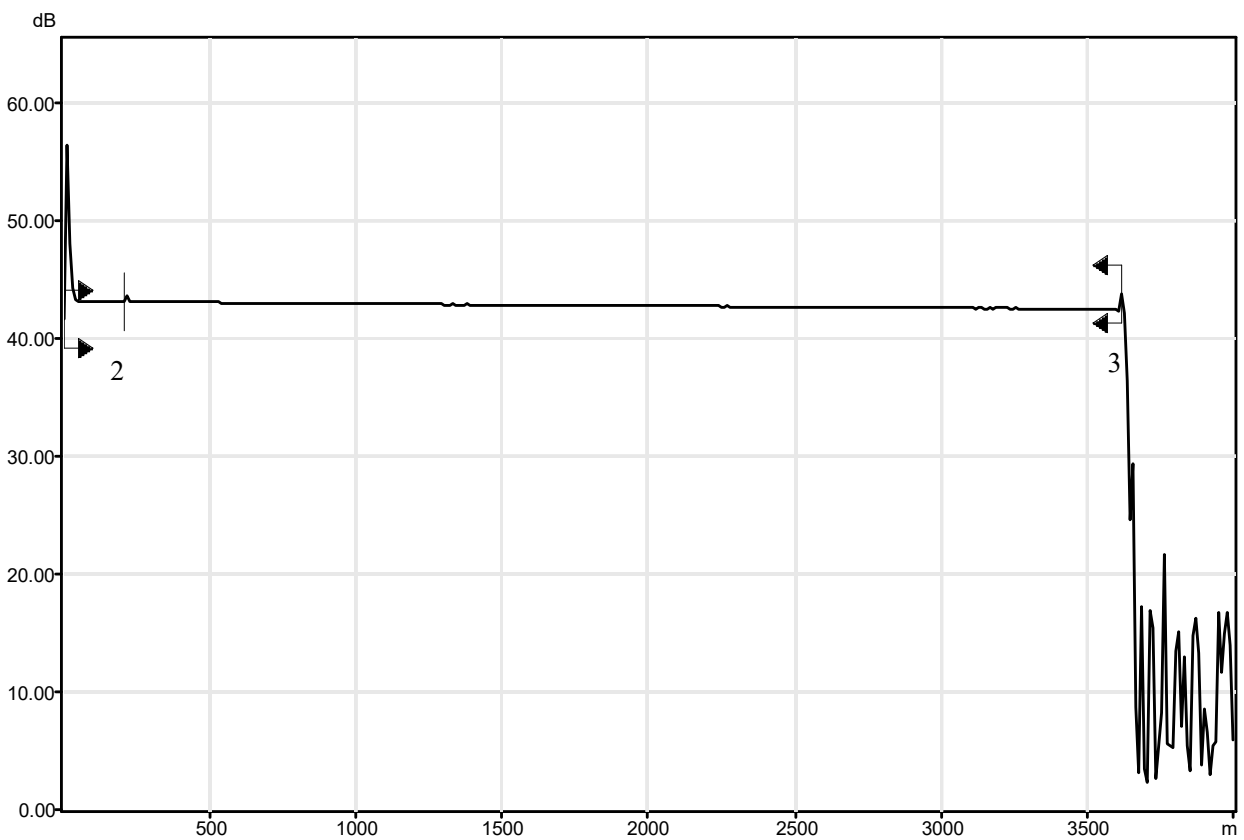
Cable info

Fiber ID	:	Cable ID	:
Location A	:	Location B	:
Cable mfr.	:	Type	:
Subset ID	:	Color ID	:

Link measurements

Span loss	:	5.311 dB	Avg. splice loss	:	---
Span length	:	3.6111 km	Max. splice loss	:	---
Average loss	:	1.471 dB/km	Span ORL	:	---

OTDR trace



OTDR report

Events table

No.	Loc. (km)	Event type	Loss (dB)	Refl. (dB)	Att. (dB/km)	Cumul. (dB)
1	0.0000	Reflective Fault	0.000	-30.9		0.000
		Fiber Section (0.2113 km)	4.693		22.206	4.693
2	0.2113	Reflective Fault	-0.043	-62.5		4.650
		Fiber Section (3.3998 km)	0.661		0.195	5.311
3	3.6111	Reflective Fault	28.029	-56.9		5.311

Marker info

A : N/A	B : N/A
a : N/A	b : N/A
A to B distance : N/A	A to B ORL : N/A
3-pt. reflectance : N/A	A to B LSA att. : N/A
4-pt. Ev. loss : N/A	

Test and cable setup

Wavelength : 1550 nm (SM-9µm)	Acq. time : 30 s
Filename : KRAKR01OK - 15 - 001_1550.sor	Pulse width : 30 ns
Hardware :	Helix factor : 0.00 %
Serial number : 17008	Splice loss threshold : 0.020 dB
Software : N/A	Reflectance threshold : -72.0 dB
Range : 5.0001 km	End-of-fiber threshold : 5.000 dB
IOR : 1.468200	
RBS : -81.00	

Comments